



DOORTRONIX, INC
5783 C.R. 1219
MALAKOFF, TX 75148
TEL: 888-453-5196
FAX: 888-579-4639
www.doortronix.com

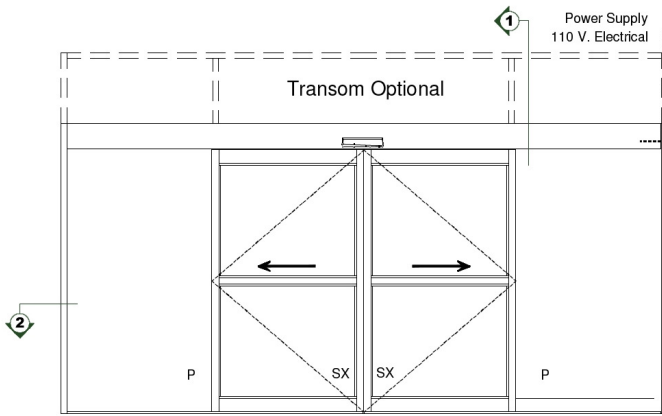
THE NEXT GENERATION OF AUTOMATIC DOORS

DOORTRONIX LINEAR BEARING 2100 SERIES

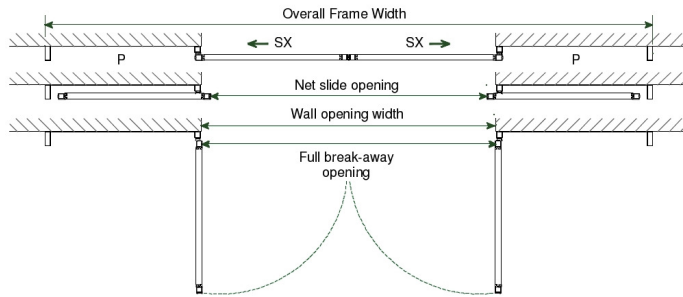
P - SX - SX - P
BIPART ESA NO SIDELITES

PROJECT INFORMATION

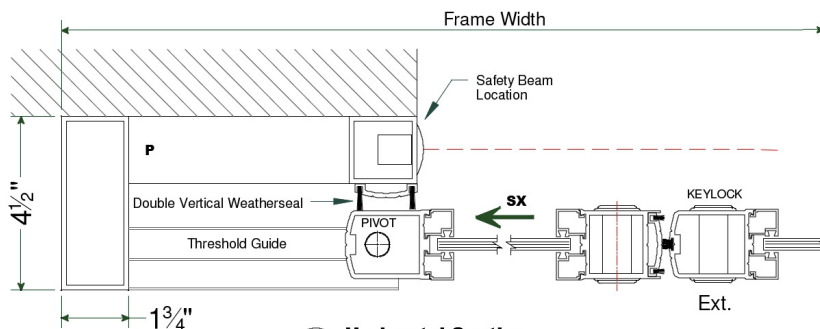
PROJECT NAME:	
LOCATION:	
DOOR	
NUMBERS:	
DATE: SHEET:	SHEET: OF



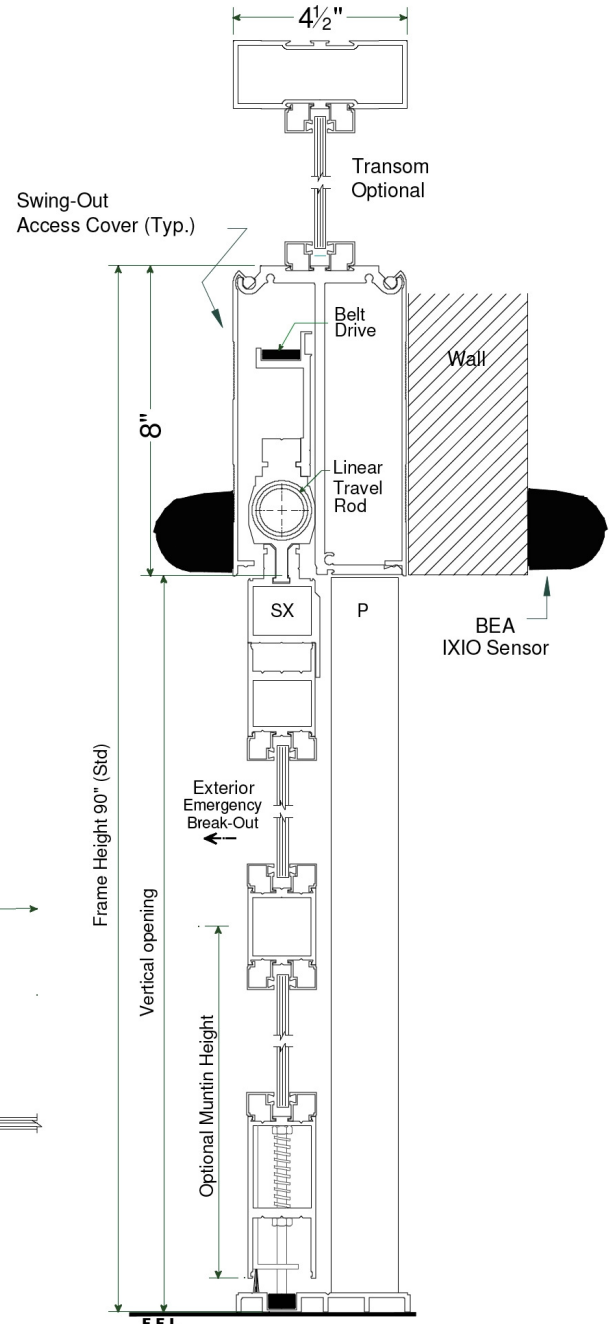
Exterior Elevation



Elevation & floor plans
Exterior view elevation



1 Horizontal Section
Type P-SX-SX-P



2 Vertical Section

NOTES

1. ELECTRICAL REQUIREMENTS: 120 VAC, 5 AMP MIN TO POWER OPERATOR BY ELECTRICAL CONTRACTOR.
2. ROUGH OPENING SHALL PROVIDE 1/4"[6] SHIM SPACE ON SIDES AND TOP OF PACKAGE.
3. LIMITS OF ACTIVATION AND SAFETY ZONES ARE FOR REFERENCE ONLY; SEE ANSI/BHMA A156.10 FOR DETAILED REQUIREMENTS.
4. SEE SPECIFICATIONS FOR ADDITIONAL INFORMATION.

Model	Frame Width	Frame Height	Clear Door Opening	Vertical Opening	Full Breakout Opening	Wall Opening Width
P-SX-SX-P	9'-0" (2743)	90" (2286)	42" (1067)	82" (2083)	50" (1260)	48" (1219)
P-SX-SX-P	10'-0" (3048)	90" (2286)	48" (1219)	82" (2083)	56" (1412)	55" (1397)
P-SX-SX-P	12'-0" (3658)	90" (2286)	60" (1524)	82" (2083)	68" (1717)	67" (1702)
P-SX-SX-P	14'-0" (4267)	90" (2286)	72" (1829)	82" (2083)	80" (2022)	79" (2007)
P-SX-SX-P	16'-0" (4877)	90" (2286)	84" (2129)	82" (2083)	92" (2326)	91" (2311)

*Imperial (Metric - mm) - Consult Factory For Custom Sizes